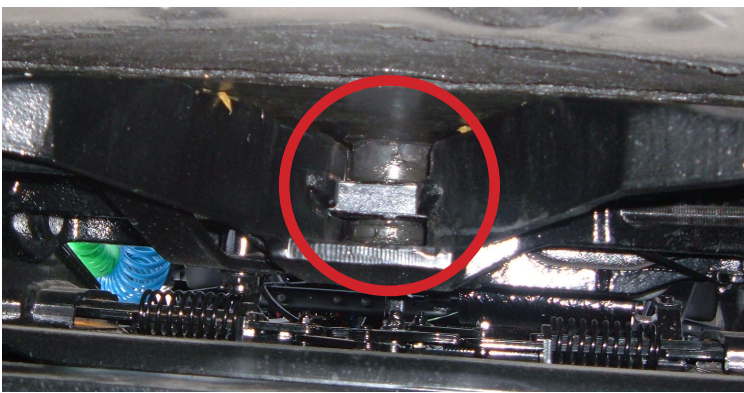


MAKING CONNECTIONS

In order to hook up properly:

- The fifth wheel jaws need to be locked around the kingpin
- The coupling integrity should be verified
- After coupling integrity is verified, the fifth wheel should still be locked and the jaws closed around the trailer kingpin
- The release arm should be in the closed position

CORRECT Hook-up

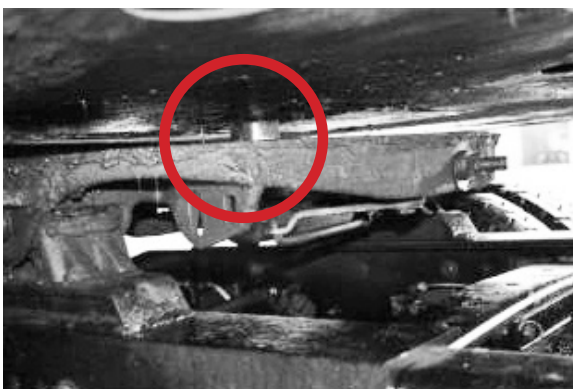


Jaws **properly** locked around kingpin

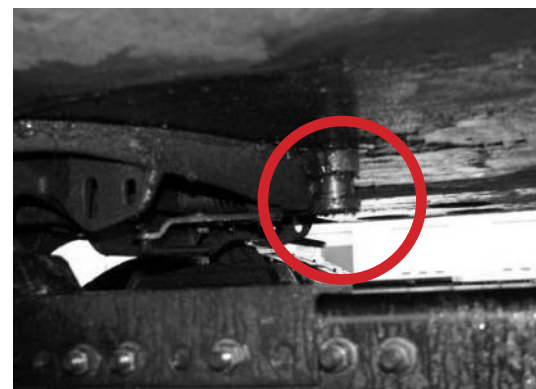


No gaps between fifth wheel and upper coupler

INCORRECT Hook-up



Kingpin **on top** of locking jaw



Kingpin **in front** and **not** locked

Failure to hook up properly could result in an accident.